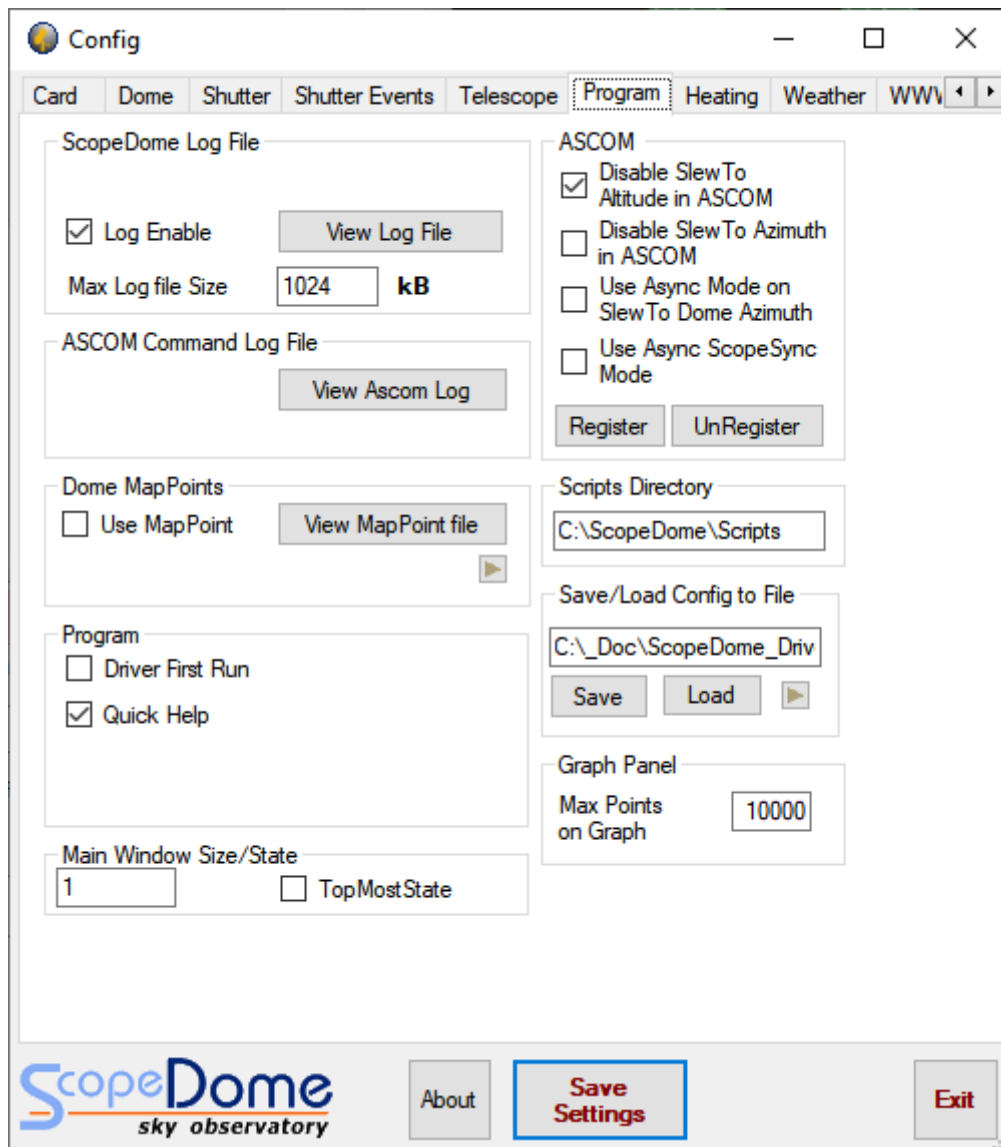


How to upgrade ScopeDome dome driver?

1. First, please run the old driver and open **Config** window.
2. Next please open **Program** Tab.
3. In **Save/Load Config to File** box press **Save** button.
4. Now you can uninstall the old driver.

5. Next install the new driver and run it.
6. In **Config>Program** tab press **Load** button.
7. Finally press **Save Settings** button.



How to install ScopeDome dome driver?

1. Please remember to install first latest ASCOM platform version.
2. First, please run the installation file: **ScopeDomeUSBDrive ver 5.5.5.16.exe** (or later version) from **Software** directory on CDRom attached to the package or download the installer from our web site.
3. **Please do not change standard installation directory: C:\ScopeDome**
4. Open **Config** Window
5. Select **Dome Type**
6. Select **Card Type**
7. Click **Save Settings** button
8. Click **Restore Default** button
9. Select **Connect by** (we recomendate to use Ethernet connection option)
10. Click **Save Settings** button again
11. Click Exit
12. Restart the driver

The screenshot shows the 'Config' window for the ScopeDome driver. The window has a title bar with 'Config' and standard window controls. Below the title bar is a tabbed interface with tabs for 'Card', 'Dome', 'Shutter', 'Shutter Events', 'Telescope', 'Program', 'Heating', 'Weather', and 'WWW'. The 'Card' tab is active, showing the following settings:

- Card and Dome type:**
 - Dome Type: ScopeDome 3M
 - Card Type: ScopeDome Arduino Dome v10f13
 - Buttons: Restore Default, Send config to card
- Card Configuration:**
 - USB Card Loop Time: 50 ms
 - Encoder Debounce Time: 2 ms
 - Sensors Debounce Time: 2 ms
 - Encoder Max Value: 15000 clk
 - Encoder Min Value: -15000 clk
 - Encoder value for 360°: 3280 clk
 - Dome inertia calibration steps: 120 step
 - Dome position compare precision: 10 clk
 - Disable Derotate on Inertia Calibration
 - Disable Calib. Request
 - Negative Home Sensor
- ScopeDome Arduino Card:**
 - Connect by: Ethernet
 - IP Address: 192.168.001.120
 - Password: default
 - COM port: COM7
 - Buttons: Reset Master, Reset Slave
- Dome Counters and encoder calib.:**
 - Buttons: Reset Encoder ENC = 0, Calibrate Dome Motor Inertia, Calibrate Dome Encoder

At the bottom of the window, there is a logo for 'ScopeDome sky observatory' and three buttons: 'About', 'Save Settings' (highlighted with a blue border), and 'Exit'.