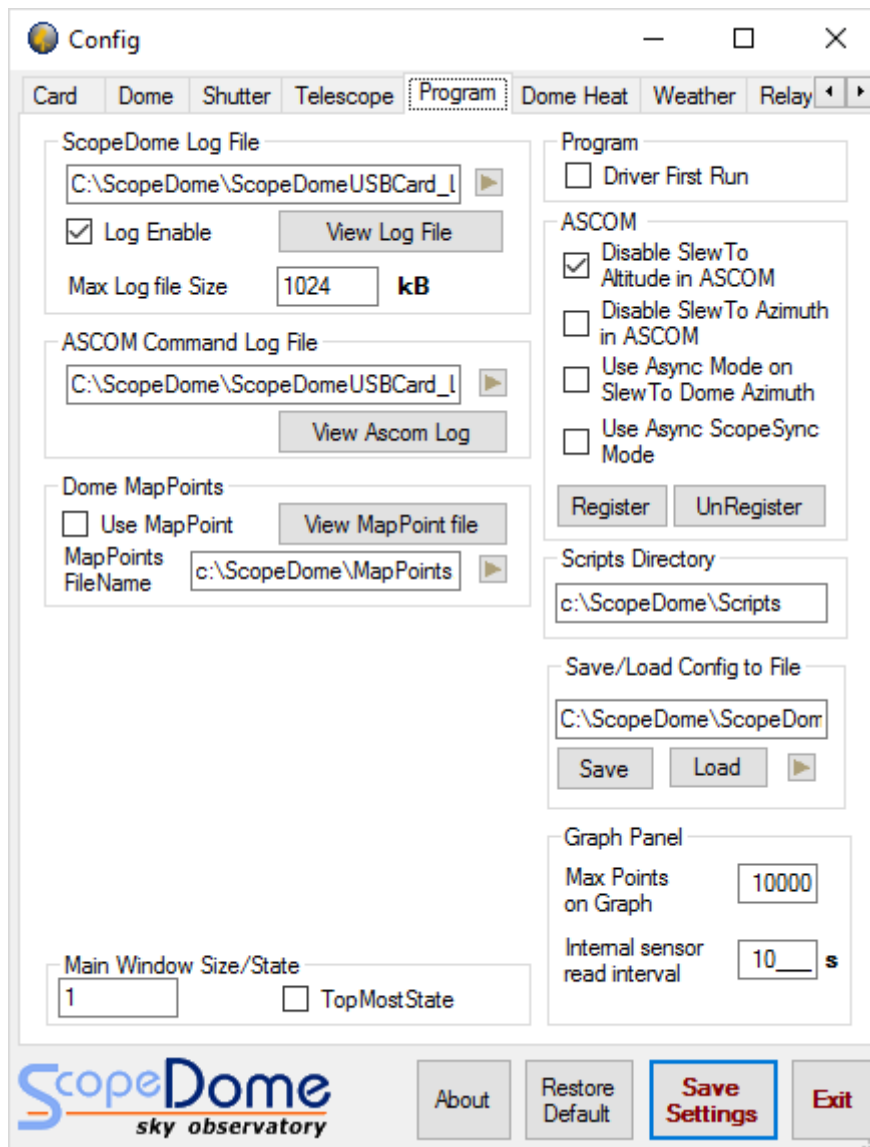


## How to upgrade ScopeDome dome driver?

1. First, please run the old driver and open **Config** window.
2. Next please open **Program** Tab.
3. In **Save/Load Config to File** box press **Save** button.
4. Now you can uninstall the old driver.  
-----
5. Next install the new driver and run it.
6. In **Config>Program** tab press **Load** button.
7. Finally press **Save Settings** button.



## How to install ScopeDome dome driver?

1. First, please run the installation file: **ScopeDomeUSB DomeDriver ver 5.1.38.0.exe** (or later version) from **Software** directory on CDRom attached to the package or download the installer from our web site.
2. **Please do not change standard installation directory: C:\ScopeDome**
3. After the installer is running **please follow the steps displayed on the screen.**
4. Before the first launching the driver there is a need to configure it using **Quick Setup** window.

